




## P&O HSE&C

### General Safety Rules Safe Work Practice (SWP)

	<p>This document is governed by GOO Document Lifecycle process. Changes to this document must be approved by the GOO GoM Document Governance Board before they can be implemented. Contact IMDC team for additional guidance.</p>
---	---

12	08/12/2024	Revised - Issued for GoM Use eGDB GoM-DL-2024-00165	GoM HSE&C Manager	GoM HSE&C Discipline Lead
11	1/22/2024	Revised - Issued for GoM Use eGDB GOM-DL-2023-00146	GoM HSE Manager	GoM H&S Team Lead
10	11/26/2018	Revised - Issued for GoM Use	Pam Tomme	Melissa Mark
9	03/01/2017	Revised - Issued for GoM Use	Pam Tomme	Melissa Mark
8	02/20/2015	Revised - Issued for GoM Use	GoM Programs Team Lead	GoM HSE Manager
7	03/24/2014	Revised - Issued for GoM Use	GoM Programs Team Lead	GoM HSE Director
6	02/04/2013	Revised - Issued for GoM Use	GoM Programs Team Lead	GoM HSE Director
5	01/24/2013	Revised - Issued for GoM Use	GoM Programs Team Lead	GoM HSE Director
4	08/27/2012	Revised - Issued for GoM Use	GoM Programs Team Lead	GoM HSE Director
3	06/01/2008	Revised - Issued for GoM Use	GoM HSSE Programs Manager	GoM HSSE Director
2	06/09/2006	Revised- Issued for GoM Use	Kathy Kanocz	S. Garner/ S. Tink/ R. DeLeonardis/ C
Rev	Date	Document Status	Custodian/Owner-Name	Authority-Name

<b>Document Number:</b>	UPS-US-SW-GOM-HSE-DOC-00106-2	<b>Document Title:</b>	General Safety Rules Safe Work Practice
<b>Revision Number:</b>	12	<b>Revision Date:</b>	12-Aug-24
		<b>Page:</b>	Page 1 of 17
<b>Warning: Check Document Management System to ensure you are using the correct revision.</b>			

**COMPLETE THE AMMENDMENT AND INFORMATION RECORD BEFORE SUBMITTING TO THE DOCUMENT CONTROLLER FOR PROCESSING**

**AMENDMENT RECORD**

Amendment Date	Revision Number	Amender Initials	Amendment Description
8/12/2024	12	AL	<p>3.4 Included guidance on the location of storage boxes and secondary retention on lid requirement.</p> <p>3.6 Added words sexual orientation, gender identity, marital status for diversity and inclusion.</p> <p>3.10 Added verbiage to clarify requirements for the usage of electronics outside of the living quarters.</p>
1/22/2024	11	SF	<p>Added Personnel shall not enter defined Radiation work areas without permission from the Radiation Protection Supervisor/Work site owner.</p> <p>Add Galley etiquette to remove OIM standing instructions.</p> <p>Updated Section 3.5 Health and Industrial Hygiene fatigue management guidance for workforce. These includes maximum working hours and approval process to work extended hours, minimum break periods between shifts, maximum consecutive work days and approval process to work extended days, mid-hitch rollovers, break period between shift cycle/hitch, and the electronic form for the fatigue assessment and mitigation plan.</p>
11/26/2018	10	DL	<p>3.3.5 Changed maximum allowed work days from 21 to 28 and removed reference to DWOP Manual. Added Reference to GoM Fatigue Management Plan.</p> <p>3.7 Incident Reporting added US Coast Guard reporting information.</p> <p>3.10 Added this section on Emergency Shutdown Activation Expectations.</p> <p>3.12 Added this section on Scaffolding Storage Requirements</p> <p>3.13 Added this section on Lifting and Lowering Equipment section added to address tools being lowered on rope with hand tied knots.</p> <p>3.14 Added this section on Flogging Spanner (Hammer Wrench) Usage.</p>
01/24/2002	0	RB	Initial issue as controlled document. Prior revision history located in hard-copy consolidated manual.

<b>Document Number:</b>	UPS-US-SW-GOM-HSE-DOC-00106-2	<b>Document Title:</b>	General Safety Rules Safe Work Practice
<b>Revision Number:</b>	12	<b>Revision Date:</b>	12-Aug-24
		<b>Page:</b>	Page 2 of 17
<b>Warning: Check Document Management System to ensure you are using the correct revision.</b>			

## INFORMATION RECORD

<b>Authority Title:</b>	GoM HSE&C Manager
<b>Custodian Title:</b>	GoM HSE&C Discipline Lead
<b>Original Issue Date:</b>	01/24/2002
<b>Next Review Date (if applicable):</b>	03/01/2022
<b>Function:</b>	HSE
<b>OMS Sub Element:</b>	3.2
<b>Retention Code:</b>	ADM3000
<b>Security Classification:</b>	BP Internal

<b>Document Number:</b>	UPS-US-SW-GOM-HSE-DOC-00106-2	<b>Document Title:</b>	General Safety Rules Safe Work Practice
<b>Revision Number:</b>	12	<b>Revision Date:</b>	12-Aug-24
		<b>Page:</b>	Page 3 of 17
<b>Warning: Check Document Management System to ensure you are using the correct revision.</b>			

## TABLE OF CONTENTS

<b>1</b>	<b>Purpose &amp; Scope .....</b>	<b>5</b>
<b>2</b>	<b>Key Responsibilities .....</b>	<b>5</b>
<b>3</b>	<b>Requirements .....</b>	<b>5</b>
3.1	Personal Safety Requirements .....	5
3.2	Galley Etiquette & Access .....	6
3.3	Gym/Wellbeing Center Etiquette.....	6
3.4	Dropped Object Prevention Requirement .....	7
3.5	Health & Industrial Hygiene Requirements .....	8
3.6	Security Requirements .....	9
3.7	Environmental Requirements .....	10
3.8	Procedures and Practices .....	10
3.9	Incident Reporting Requirements .....	10
3.10	Control of Work Requirements .....	11
3.11	Emergency Response/Fire Protection Requirements .....	12
3.12	Emergency Shut Down Activation .....	13
3.13	Ladder Usage Requirements .....	13
3.13.1	General Ladder Usage Requirements .....	13
3.13.2	Portable Ladder Usage Requirements .....	13
3.13.3	Fixed Ladder Usage Requirements .....	13
3.14	Scaffolding Storage Requirements .....	14
3.14.1	Scaffolding Component Storage .....	14
3.14.2	Container \ Rack Design and Construction and usage.....	14
3.14.3	Container \ Rack Location.....	15
3.15	Lifting and Lowering Tools and Equipment .....	15
3.16	Flogging Spanner (Hammer Wrench) Usage .....	15
<b>4</b>	<b>Key Documents / Tools / References.....</b>	<b>15</b>

<b>Document Number:</b>	UPS-US-SW-GOM-HSE-DOC-00106-2	<b>Document Title:</b>	General Safety Rules Safe Work Practice
<b>Revision Number:</b>	12	<b>Revision Date:</b>	12-Aug-24
		<b>Page:</b>	Page 4 of 17
<b>Warning: Check Document Management System to ensure you are using the correct revision.</b>			

# 1 Purpose & Scope

This Safe Work Practice (SWP) describes general requirements that personnel shall adhere to while working at GoM Region facilities, including onshore facilities (e.g., BP Controlled sites, Fourchon Supply Base, PMF/HOLC, and the PHI Heliport). This SWP supplements personnel inductions to assist in describing safety, security, health and general safe work practice expectations. This SWP describes how GoM Region implements multiple OMS expectations, including:

- OMS 2.2.4 Personnel Inductions
- OMS 3.2 Personal Safety
- OMS 3.4 Health & Industrial Hygiene
- OMS 3.5 Security
- OMS 3.6 Environment
- OMS 4.1 Procedures and Practices
- OMS 4.4 Incident Management
- OMS 4.5 Control of Work
- OMS 4.6 Crisis and Continuity Management
- OMS 7.1 Regulatory Compliance

# 2 Key Responsibilities

GoM Region personnel, including employees, contractors, subcontractors and visitors, are responsible to know and comply with these general requirements in addition to all other GoM safe work practices.

# 3 Requirements

## 3.1 Personal Safety Requirements

Personnel shall use handrails when ascending or descending stairways and take only one step at a time.

Personnel shall not run in work areas, except to escape dangerous situations.

Personnel shall not spray compressed air/gas on themselves or others.

Personnel shall not walk into hazardous environments such as natural gas liquids, flammable liquids, smoke or a flammable gas cloud for the purpose of minimizing or stopping a spill or to protect the company's assets.

Personnel shall not lean against or support their body weight on any guardrail/handrail. Personnel shall not use guardrails for stabilizing support or load bearing applications. Only signs and safety equipment may be mounted on guardrails.

Personnel shall comply with the occupied and non-occupied building list requirements maintained by the facilities.

Personnel shall not fish from offshore facilities.

<b>Document Number:</b>	UPS-US-SW-GOM-HSE-DOC-00106-2	<b>Document Title:</b>	General Safety Rules Safe Work Practice
<b>Revision Number:</b>	12	<b>Revision Date:</b>	12-Aug-24
		<b>Page:</b>	Page 5 of 17
<b>Warning: Check Document Management System to ensure you are using the correct revision.</b>			

Personnel shall be familiar with each facility's specific procedures to access operating areas. Personnel shall not enter production facility areas, drilling facilities or any hull, columns or pontoons without prior authorization unless they are part of a normally assigned work team for that area or are performing a task with an approved Work Control Certificate (WCC).

The use of individual knives and multi-purpose tools (such as a 'Leatherman®') are prohibited and will not be allowed offshore or at shore-based facilities. Alternative cutting devices will be provided for tasks (e.g., tin snips, polyvinyl chloride [PVC] cutters, wire cutters, etc.). The galley staff will be allowed to use knives while performing their daily duties.

Personnel shall wear the minimum PPE identified within associated risk assessments and the Facility PPE Matrix for the assigned task. If the proper PPE is not available or unclear, contact the facility HSSE representative for assistance.

Personnel shall not wear jewelry that could lead to an injury while outside of offshore quarters or accommodations area. This includes the removal of all finger rings, hoop, dangling, or metallic ear rings, medallions, necklaces, and bracelets and facial jewelry including tongue piercings. Nonconductive, stud type piercing retainers may be used if covered by clothing or bandage. Copper bracelets worn for medical reasons must have an opening and be kept secure and not loose on the wrist. Watches must have break away pins or breakaway connections.

Technicians working in electrical energized area such as a motor control center, fire panel, etc. shall not wear conductive clothing or jewelry such as watch bands, bracelets, rings, or necklaces. Non-conductive watches are permitted.

Personnel shall not operate equipment unless skilled and knowledgeable on that equipment.

Under normal operations, operating machinery and electrical switchgear shall have required safety guards, switches, and alarms in place, and these shall be functioning appropriately.

### 3.2 Galley Etiquette & Access

Personnel shall not wear the following in the galley:

- Shorts
- Sleeveless shirts
- Open toed shoes
- Sweaty gym clothes
- Severely soiled work clothes
- Hard hats

No tobacco use is permitted in the galley during meal times.

Only Authorized personnel are permitted to enter the kitchen, coolers, and pantry areas. This restriction includes entering the food prep area to access the warmer box. Food and other items must be requested from a galley attendant.

Any violations of the above will be reported to the OIM.

### 3.3 Gym/Wellbeing Center Etiquette

Proper clothing is required in the gym:

- Closed toed athletic shoes
- Shirt
- Athletic pants or shorts

No work clothes are permitted to be worn in the gym.

<b>Document Number:</b>	UPS-US-SW-GOM-HSE-DOC-00106-2	<b>Document Title:</b>	General Safety Rules Safe Work Practice
<b>Revision Number:</b>	12	<b>Revision Date:</b>	12-Aug-24
		<b>Page:</b>	Page 6 of 17
<b>Warning: Check Document Management System to ensure you are using the correct revision.</b>			

No steel toed boots or crocs are permitted to be worn in the gym.

The gym is a place to workout. It is not permitted to “hang out” and play on phone or make personal calls. No loitering.

### 3.4 Dropped Object Prevention Requirement

Any material that has the potential to become a dropped object shall be secured. This includes tools, materials, and equipment that are carried or located on stairways, catwalks, within 6 feet of handrails, over grating or across decks that have the potential to fall to a lower level or overboard.

#### Securing Tools, Materials, and Equipment

- All materials, tools, and equipment that have the potential to become dropped objects shall be secured using the following methods:
  - **Tool Bags, Belts, and Backpacks:** Tools and small materials must be stored in properly rated and secured tool bags, tool belts, or backpacks designed to prevent items from falling.
  - **Lanyards:** Tools and equipment must be fitted with lanyards or tethering devices to prevent them from being dropped when in use.
  - **Secondary Retention:** containers such as toolboxes, buckets, or crates must have secondary retention features, such as lids with securing mechanisms or equivalent devices, to prevent accidental openings and dropping of contents.

#### Securing Small Personal Items

- **Personal Items:** Secure small items like pens, water bottles, and clipboards to prevent them from becoming dropped objects or getting caught on structures or equipment.
  - **Pens:** Pens must be kept inside pockets or secured with clips inside workwear.
  - **Water Bottles:** Water bottles should be carried in tethered pouches to prevent accidental dropping.

#### Specific Equipment Safety

- **Hard Hats:** Hard hats must be secured using lanyards or other devices to prevent them from falling off in elevated areas or during movement.
- **Hand-Held Radios:** Hand-held radios must be carried in holsters specifically designed for the radio model and must be securely attached to tool belt or work clothes to prevent dropping.

#### Work in Hazard Zones

- For tasks conducted near stairways, handrails, platforms, or grating, extra care must be taken to secure all tools, materials, and personal items. Barriers or nets may be required in high-risk zones to protect personnel working below. Any work conducted near stairways, catwalks, or elevated platforms where the potential for dropped objects exists must be evaluated. Additional controls, such as using netting or barricading the area below, must be implemented to protect individuals and equipment at lower levels.

#### Inspection and Maintenance

- Regular inspections of all securing devices, such as lanyards, tool bags, and secondary retention systems, must be carried out to ensure their integrity and effectiveness.
- Damaged or worn-out securing devices must be replaced immediately.

<b>Document Number:</b>	UPS-US-SW-GOM-HSE-DOC-00106-2	<b>Document Title:</b>	General Safety Rules Safe Work Practice
<b>Revision Number:</b>	12	<b>Revision Date:</b>	12-Aug-24
		<b>Page:</b>	Page 7 of 17
<b>Warning: Check Document Management System to ensure you are using the correct revision.</b>			

For specific guidance pertaining to dropped object prevention while working at heights over 6 feet, refer to the Working at Heights SWP.

### 3.5 Health & Industrial Hygiene Requirements

- A. Personnel shall report to the medic or other designated person when they use or possess prescription/non-prescription (e.g., over-the-counter) medication.
- B. Personnel shall submit to medical evaluation or alcohol/drug testing where cause exists such as suspected alcohol or drug use, post-accident or incident, and when randomly selected.
- C. Personnel shall maintain prescription and over the counter medications, including supplements, vitamins, and protein powders, in their original containers.
- D. Personnel shall report significant medical conditions (i.e., pacemakers, diabetes, allergies) to the Medic using the Offshore Medical Information Form.
- E. Personnel shall work in accordance with the fatigue management guidelines in the chart below:

Categories	Limits on hitches / working hours
Maximum Hours of Work Per Day	16 hours
Minimum Rest Period Between Shifts	8 hours
Maximum Consecutive Working Days	28 days
Maximum Hitch (21/21)*	21 days*
Minimum Rest Period Between Rotations	3 days

\*Offshore hitch examples 14/14 or 21/21.

*NOTE: bp employees are to follow the bp fatigue management policy.*

1. The maximum number of hours of work during a rolling 24-hour period is 16 hours.
2. Any request for personnel (including employees, contractors, subcontractors and visitors) to work beyond 16 hours must be supported by a documented risk assessment and approved by the OIM and/or Area Production Manager (APM).
3. Escalation/Approval System (pre-approval process for work beyond 12 hours)
  - a. Level 1 – Any request for personnel to work up to two additional hours beyond a 12-hour shift (excluding shift handover) (i.e., up to 14 hours) must be approved by the Team Leader and supported by the consideration and mitigation of risk.
  - b. Level 2 – Any request for personnel to work beyond a 14-hour shift (excluding shift handover) (i.e., up to 16 hours) must be approved by the OIM or Senior Manager (for that operation, well site, or project) and supported by a risk assessment.
4. The minimum required break between shifts is 8 hours, to allow enough time for sleeping, washing, and eating. This is in conformance with the maximum 16-hour shift.
5. The maximum number of consecutive work days allowed for personnel is 28 days. Deviations from this are considered exceptions to the policy and should only be used in urgent situations.
6. Any request for personnel to work between 29 and 35 consecutive days must be supported by a documented risk assessment and approved by the OIM.
7. Any request for personnel to work beyond 35 consecutive days must be supported by a documented risk assessment and approved by the APM.

<b>Document Number:</b>	UPS-US-SW-GOM-HSE-DOC-00106-2	<b>Document Title:</b>	General Safety Rules Safe Work Practice
<b>Revision Number:</b>	12	<b>Revision Date:</b>	12-Aug-24
		<b>Page:</b>	Page 8 of 17
<b>Warning: Check Document Management System to ensure you are using the correct revision.</b>			



8. Mid-hitch rollovers / short changes should be minimized. The business recognizes that there may be times when these are needed; therefore, mid-hitch rollovers / short changes require written approval from the OIM.
  9. The minimum break between shift cycles is 3 rest days plus 1 travel day. This does not prohibit setting longer break goals.
  10. Any deviations in the shift cycle (hitch) must be supported by a documented risk assessment.
  11. Use the Fatigue Assessment and Mitigation Plan found in [Appendix F of this FMP](#). Submit all fatigue risk assessments using the Microsoft form found here: <https://forms.office.com/r/FByAFKvnbc>.
- F. Personnel shall limit manually lifting loads to the following criteria:
1. 50 pounds chest-level and below.
  2. 25 pounds above chest-level.
- NOTE:** Manually lifting heavier loads can be accomplished by dividing the weight among more than one person so that no individual is lifting more than the weight limits listed. Mechanical lifting devices shall be used if manual lifting limits will be exceeded.
- G. Personnel shall review the site-specific hazard communication program, understand hazardous chemical labeling requirements and understand how to access hazardous chemicals safety data sheets (SDS) on the facility.
  - H. Prior to the arrival of new chemicals on the facility, all personnel, including contractors, shall ensure that SDS's of all chemicals that they will purchase or bring aboard have been reviewed, approved, and added to the electronic SDS system. Personnel can contact the BP HSSE Representative or Industrial Hygienist.
  - I. Personnel that observe potential Toxic Substance Control Act reporting issues or that have allegations of adverse health or environmental effects due to BP products or chemicals shall contact their GoM HSSE representative, as well as their supervisor.

### 3.6 Security Requirements

Personnel are prohibited from possessing or using illegal drugs, drug-related paraphernalia, intoxicating beverages, pornographic material, explosives, hazardous substances, firearms, ammunition, firearm parts or other weapons, such as brass knuckles, tasers, and mace.

Personnel shall not participate in horseplay (e.g., rough or boisterous play) or fighting.

Personnel shall not participate in "contact type" contests of strength recreational activities (e.g., arm wrestling, thumb wrestling, wrist bending, etc.).

No photos or videos shall be taken outside of the quarters/office area without prior approval from the OIM / Facility Supervisor.

In case of a suspicious package detected, personnel shall leave the area immediately and report situation to their supervisor or call the control room. Hand-held radio or cellular phone should not be used to report such incident.

Personnel shall be aware of and report any suspicious personnel and activities to their supervisor immediately.

BP may conduct unannounced searches of personnel, automobiles, and other personal properties.

<b>Document Number:</b>	UPS-US-SW-GOM-HSE-DOC-00106-2	<b>Document Title:</b>	General Safety Rules Safe Work Practice
<b>Revision Number:</b>	12	<b>Revision Date:</b>	12-Aug-24
		<b>Page:</b>	Page 9 of 17
<b>Warning: Check Document Management System to ensure you are using the correct revision.</b>			

Personnel shall not harass any other personnel based on race, color, sex, religion, national origin, citizenship status, age, sexual orientation, gender identity, marital status, physical or mental disability, or veteran status.

The BP Weapons Policy strictly prohibits employees, or any person providing services to BP or located on BP premises from possessing weapons of any kind at the workplace. The following penalties apply to any BP employee, contractor, or 3rd party vendor that works in the GoM. This applies to the GoM workplace including heliport, shipping facilities, PMF, HOLC, Westlake campus, and any contracted vessels.

Violation	1 <sup>st</sup> Offense	2 <sup>nd</sup> Offense	3 <sup>rd</sup> Offense
<b>Firearm Violations (Firearms of any kind – loaded or unloaded)</b>	<ul style="list-style-type: none"> <li>BP Employee - 2 week suspension without pay.</li> <li>Contract (includes contingent labor) - 2 week No Fly.</li> <li>Reinstatement upon investigation</li> </ul>	<ul style="list-style-type: none"> <li>BP Employee - Termination</li> <li>Contract – Permanent No Fly Ban</li> </ul>	N/A
<b>Handgun Parts; Ammunition and other weapons (brass knuckles, knives and Tasers)</b>	<ul style="list-style-type: none"> <li>Return contraband to car. Violator allowed to fly the same day.</li> </ul>	<ul style="list-style-type: none"> <li>BP Employee – 2 week suspension without pay</li> <li>Contract – 2 week No Fly</li> </ul>	<ul style="list-style-type: none"> <li>BP Employee - Termination</li> <li>Contract – Permanent No Fly Ban</li> </ul>

### 3.7 Environmental Requirements

Personnel shall dispose of fluids, trash, and/or items in the correct marked and dedicated recycling and trash containers using the proper disposal method (e.g., proper puncturing of aerosol cans before disposal).

Personnel shall not throw fluids, objects, trash, and/or any items overboard as this is considered marine trash and debris and is strictly prohibited and punishable by the U.S. Coast Guard and Environmental Protection Agency. Personnel shall report all marine trash and debris accidents to their supervisor immediately.

Personnel should report sheens noticed on the water to their supervisor.

### 3.8 Procedures and Practices

Operating with an unlit Flare is not acceptable unless the proper Operational Risk Assessment (ORA) is performed and documented as per your SOP's.

### 3.9 Incident Reporting Requirements

Injuries or incidents, regardless of severity, as well as observed safety practice violations, and noncompliance issues shall be immediately reported. The primary means of reporting is directly to your immediate supervisor or the Person-in-Charge; issues may also be documented in IRIS. If you prefer to report violations or noncompliance issues and remain anonymous, the primary reporting option is through

<b>Document Number:</b>	UPS-US-SW-GOM-HSE-DOC-00106-2	<b>Document Title:</b>	General Safety Rules Safe Work Practice
<b>Revision Number:</b>	12	<b>Revision Date:</b>	12-Aug-24
		<b>Page:</b>	Page 10 of 17
<b>Warning: Check Document Management System to ensure you are using the correct revision.</b>			

OpenTalk. OpenTalk is available to all BP employees and contractors and is intended to allow the reporting person to remain anonymous while the reported issue is investigated and resolved. Reports to OpenTalk can be made by:

- Phone: 1-800-225-6141 or
- Intranet: <https://bp.alertline.com/gcs/welcome>

Another means of reporting available to employees and contractors is to the Bureau of Safety and Environmental Enforcement (BSEE). Any hazardous or unsafe working condition and any possible violation or failure to comply with any federal law or regulation relating to the safety of offshore oil and gas operations may be reported to BSEE.

- Phone: 1-877-440-0173
- Internet: [www.bsee.gov](http://www.bsee.gov), or
- Mail: U.S. DOI/BSEE, 1849 C Street NW, Mail Stop 5438, Washington D.C. 20240  
Attention: IRU Hotline Operations

Finally, hazardous or unsafe work conditions and possible violations to US Coast Guard regulations can be reported to the US Coast Guard Officer in Charge, Marine Inspection. The identity of the reporting person will not be made available without permission to anyone other than those officers and employees of the Department of Transportation who have a need for the record in the performance of their official duties.

- Phone: (504) 589-6225
- Email: [D8CommandCenter@uscg.mil](mailto:D8CommandCenter@uscg.mil)
- Mail: Eighth Coast Guard District, OCS, Hale Boggs Federal Building, 500 Poydras St., Suite 1341, New Orleans, LA 70130

### 3.10 Control of Work Requirements

All visitors, including BP employees, contractors, and subcontractors, shall report to a BP representative immediately upon arrival at a site. No work may be started in any area or on any equipment without the knowledge and consent of the BP representative, in accordance with Permit to Work/Control of Work authorization.

An appropriate level risk assessment shall be completed for each job task prior to conducting work activities. The Completed risk assessment shall be reviewed and signed by each member of the work party on site prior to conducting the work and shall remain accessible to all personnel involved for the duration of the task.

Electronic devices shall not be carried or used outside of the living quarters/office area on offshore facilities unless otherwise stated below.

1. Personal Electronic devices (Smart watches, fitness trackers, etc.)
  - Smart watches and fitness trackers are permitted to be worn outside the living quarters. However, they are not to be used as a communication device.
2. Cell Phones
  - Cell Phones are not to be used outside of the Living Quarters.
  - Cell phones are not permitted in office areas in the Deck box.
  - Cell phones may be transported outside of the living quarters during crew change and if transporting from a main living quarters area to an alternate living quarters area. During transportation, the cell phone must be powered off and stored in a bag or pocket.
3. E-Cigarettes
  - E-Cigarettes may only be used in the designated smoking area. Use of e-cigarettes are not allowed inside the living quarters; this includes bedrooms and bathrooms.

<b>Document Number:</b>	UPS-US-SW-GOM-HSE-DOC-00106-2	<b>Document Title:</b>	General Safety Rules Safe Work Practice
<b>Revision Number:</b>	12	<b>Revision Date:</b>	12-Aug-24
		<b>Page:</b>	Page 11 of 17
<b>Warning: Check Document Management System to ensure you are using the correct revision.</b>			

- E-Cigarettes are not to be transported outside of the living quarters, except directly to and from the smoking area. E-cigarettes are not to be transported on deck or in the plant in a pocket or backpack.

4. Laptops

- Laptops are allowed to be transported to and from the living quarters as long as they have been powered off and are stored inside a bag.
- Company issued laptops are allowed in the deck box offices for company business only.
- Laptops cannot be carried out on deck regardless of whether they are in a bag or not. The exception is if an office is located in a Connex that has been through the 3rd Party Temporary Equipment Inspection, then use of a laptop is permitted solely for business purposes, laptops transported to these offices must be stored in a bag and powered off.

5. iPads/Tablets

- Personal iPads/Tablets are not permitted outside the Living Quarters, other than for transportation purposes to and from the helicopter and to and from the alternate Living Quarters to the Main Living Quarters.
- iPads/Tablets that are issued by either BP or a core contractor and have an electrically classified case are permitted outside of the Living Quarters for the sole purpose of company related business.
- The minimum classification on the iPad/Tablet case must be a Class 1 Division 2. There are a few areas that are classified as Class 1 Division 1. If the iPad/Tablet does not meet those requirements, they are not permitted in those areas. Speak with Engineering or HSE for a listing of those areas. Areas could change based on operations taking place at the time.
- Non-core contractors are not permitted to use a iPad/Tablet even if it meets the requirements defined for the classified area.

The GoM Stop Work Authority procedures grant all personnel the responsibility and authority without fear of reprisal, to stop work or may decline to perform an assigned task that is perceived to be creating imminent risk or danger to personnel, equipment, or the environment.

Personnel shall not enter defined Danger Zones without specific permission from the Offshore Installation Manager (OIM) or designee.

Personnel shall not enter defined Radiation work areas without permission from the Radiation Protection Supervisor/Work site owner.

Personnel shall not enter a Caution Zone without understanding the specific hazards associated with the area.

Per SEMS II requirements, each BP facility will have a designated Ultimate Work Authority such as the Offshore Installation Manager (OIM) or Captain who has the responsibility and authority to make final decisions as they relate to imminent danger.

### 3.11 Emergency Response/Fire Protection Requirements

Personnel shall read and understand the Station Bills to familiarize themselves with their role in the facility emergency response plan:

Personnel shall check their work area and identify the location of firefighting equipment, emergency eyewashes, safety showers, and the current escape routes to survival equipment.

<b>Document Number:</b>	UPS-US-SW-GOM-HSE-DOC-00106-2	<b>Document Title:</b>	General Safety Rules Safe Work Practice
<b>Revision Number:</b>	12	<b>Revision Date:</b>	12-Aug-24
		<b>Page:</b>	Page 12 of 17
<b>Warning: Check Document Management System to ensure you are using the correct revision.</b>			

Personnel are responsible to know their primary and secondary muster stations, abandonment stations and emergency alarms.

Personnel shall maintain clear access to fire extinguishers, alarm boxes, fire doors, air packs, eyewash and shower stations, first-aid kits, life rings, life jackets and other life-saving devices. Personnel shall either remove obstructions or notify their supervisor if egress routes are obstructed.

Personnel are only allowed to smoke products (including electronic cigarettes, such as vapor cigarettes and “E-cigs”) in designated smoking areas. Electronic lighters in designated smoking areas are the only acceptable lighting devices for offshore facilities.

### 3.12 Emergency Shut Down Activation

Expectations for Emergency Shutdown activation is that any person who observes a situation that is Immediately Dangerous to Life or Health (IDLH), such as visible fire in the process area or the presence of a gas release will activate the Emergency Shutdown. If the situation is not Immediately Dangerous to Life or Health, contact should be made with the control room before activating the Emergency Shutdown. Immediately Dangerous to Life or Health (IDLH) is defined as likely to cause death or immediate or delayed permanent adverse health effects or prevent escape from an environment that could cause such effects.

### 3.13 Ladder Usage Requirements

#### 3.13.1 General Ladder Usage Requirements

Ladders shall be used for their intended purpose only in accordance with manufactures instructions.

Ladders shall be inspected prior to use by a competent individual to ensure they are in good condition and free of defects.

Buckets, drums, or other objects shall not be used to substitute for a ladder.

Never lean from a ladder where the center of the user's waist or belt buckle is past the edge of the ladder.

Both hands shall be available for climbing (Never carry objects in hands while climbing).

Raising and lowering of tools shall be by tool case or other positive means that will prevent objects from being dropped and hand tools must be tethered to person when working at heights above 6 feet.

#### 3.13.2 Portable Ladder Usage Requirements

Portable ladders shall be made of non-conductive material (metal and wooden portable ladders are prohibited).

Manufactures requirements including warnings, and weight limits shall be clearly visible and followed.

Confirm that ladder is secured (tied off) or manually held while in use to prevent slippage (and extends 36" above surface line if using extension ladder).

Adhere to the required angle of one foot horizontal for every four feet vertical for straight or extension ladders (for example, 8-foot vertical ladder equals 2 feet horizontal; 10 feet vertical ladder equals 2.5 feet horizontal).

#### 3.13.3 Fixed Ladder Usage Requirements

Design, construction, and installation of all fixed ladders shall comply with the OSHA regulation standard (29 CFR 1910.27).

<b>Document Number:</b>	UPS-US-SW-GOM-HSE-DOC-00106-2	<b>Document Title:</b>	General Safety Rules Safe Work Practice
<b>Revision Number:</b>	12	<b>Revision Date:</b>	12-Aug-24
		<b>Page:</b>	Page 13 of 17
<b>Warning: Check Document Management System to ensure you are using the correct revision.</b>			

## 3.14 Scaffolding Storage Requirements

29 CFR 1926 has the following recommendations for the storage of scaffold materials and approved containers or racks.

### 3.14.1 Scaffolding Component Storage

Scaffolding components shall be stored in accordance with the manufacturer's instructions and as a minimum shall meet the requirements as follows:

At no time will scaffolding material be stored or erected in such a way that it blocks a walkway, an egress, emergency equipment, or process equipment without prior approval of the OIM.

Manufacturers' scaffold material shall not be modified. Modified or damaged material shall not be used and must be discarded.

Scaffolding shall not be stored in a manner that will not cause added stress and fatigue to the components.

Scaffolding shall be stored in a manner that does not create a hazard to personnel placing or removing the components from storage.

Material shall be separated by size and type and not mixed with other material.

All scaffolding material that is used in building a scaffold will be completely disassembled and stored by individual component.

Material with extensions or arms, shall not be hung by these extensions, but will be secured properly or stored flat in a basket or box.

Scaffolding material shall be stored in a neat and orderly manner to minimize potential material access hazards.

### 3.14.2 Container \ Rack Design and Construction and usage

As a minimum scaffold components storage container \ rack shall be designed and constructed as follows:

Specifically, to allow for sufficient horizontal and vertical supports to maintain control over material and prevent any accidental displacement and collapse of the material.

Racks shall be built for specific pole length's and only used for that length of pole or plank.

Racks shall have at a minimum of 3 verticals, one on each corner and one in the middle, to keep the poles or planks from sliding off. Distance between verticals shall not be more than half the length of the component being stored. (i.e. a rack for storage of 10-foot planks shall not have more than 5 feet of spacing between the verticals.)

Racks shall have proper feet installed on the verticals.

No rack will be built higher than 4.0 ft. tall and material shall not be stacked higher than that which the rack is built to hold.

Clamps shall be stored in basket or closed sided container.

Racks shall not be double stacked.

Racks shall not be overloaded.

<b>Document Number:</b>	UPS-US-SW-GOM-HSE-DOC-00106-2	<b>Document Title:</b>	General Safety Rules Safe Work Practice
<b>Revision Number:</b>	12	<b>Revision Date:</b>	12-Aug-24
		<b>Page:</b>	Page 14 of 17
<b>Warning: Check Document Management System to ensure you are using the correct revision.</b>			

### 3.14.3 Container \ Rack Location

Scaffold components storage container \ rack locations shall be properly risk assessed to ensure placement does not create any additional hazards. At a minimum, they shall be located as follows:

Scaffold components shall not be stored within 6 feet of a handrail that is an outer personnel protection without prior approval of the OIM. Stacking near handrail for storage will require and engineered hard barricade between handrail and scaffold storage rack.

Scaffolding material should be stored on a solid deck when possible. In the event scaffolding material has to be stored over open grating, the grating shall be covered with secured material so nothing can drop through the grating.

When scaffolding material is stored on grating, the feet shall be placed over support beams or a material shall be used to spread the load (ex: 2x10 oak planks), preferably from support beam to support beam.

Scaffolding material shall not be stored on or within 3 feet of electrical cables, process tubing or piping.

Wood material shall not be stored in areas of high heat whereby it could become an ignition source.

### 3.15 Lifting and Lowering Tools and Equipment

Hand tied knots shall not be used when lifting or lowering tools and Equipment from elevation.

An alternative method, such as manufactured closing devices, carabiners, self-adhering tape shall be used in lieu of tying knots when lifting and lowering tools and equipment from elevation.

### 3.16 Flogging Spanner (Hammer Wrench) Usage

If a flogging spanner (hammer wrench) is to be used to complete a task, a finger saver device shall also be utilized.

## 4 Key Documents / Tools / References

General Safety Clause - William-Steiger OSHA Act of 1970

29 CFR 1910 Subpart E Exits Routes, Emergency Action Plan and Fire Prevention Plans

29 CFR 1910 Subpart H Hazardous Material

29 CFR 1910 Subpart I Personal Protective Equipment

29 CFR 1910 Subpart M Compressed Gas and Compressed Air Equipment

29 CFR 1910 Subpart Q Welding, Cutting, and Brazing

29 CFR 1910 Subpart Z Toxic and Hazardous Substances

30 CFR 250.193

30 CFR 250.1933

30 CFR 250.300(b) (6)

33 CFR 106 Subpart H Outer Continental Shelf

29 CFR 1910.27 Subpart D Walking-Working Surfaces Scaffolds and Rope Descent Systems

29 CFR 1910.28 Subpart D Walking-Working Surfaces Duty to have fall protection and falling object protection.

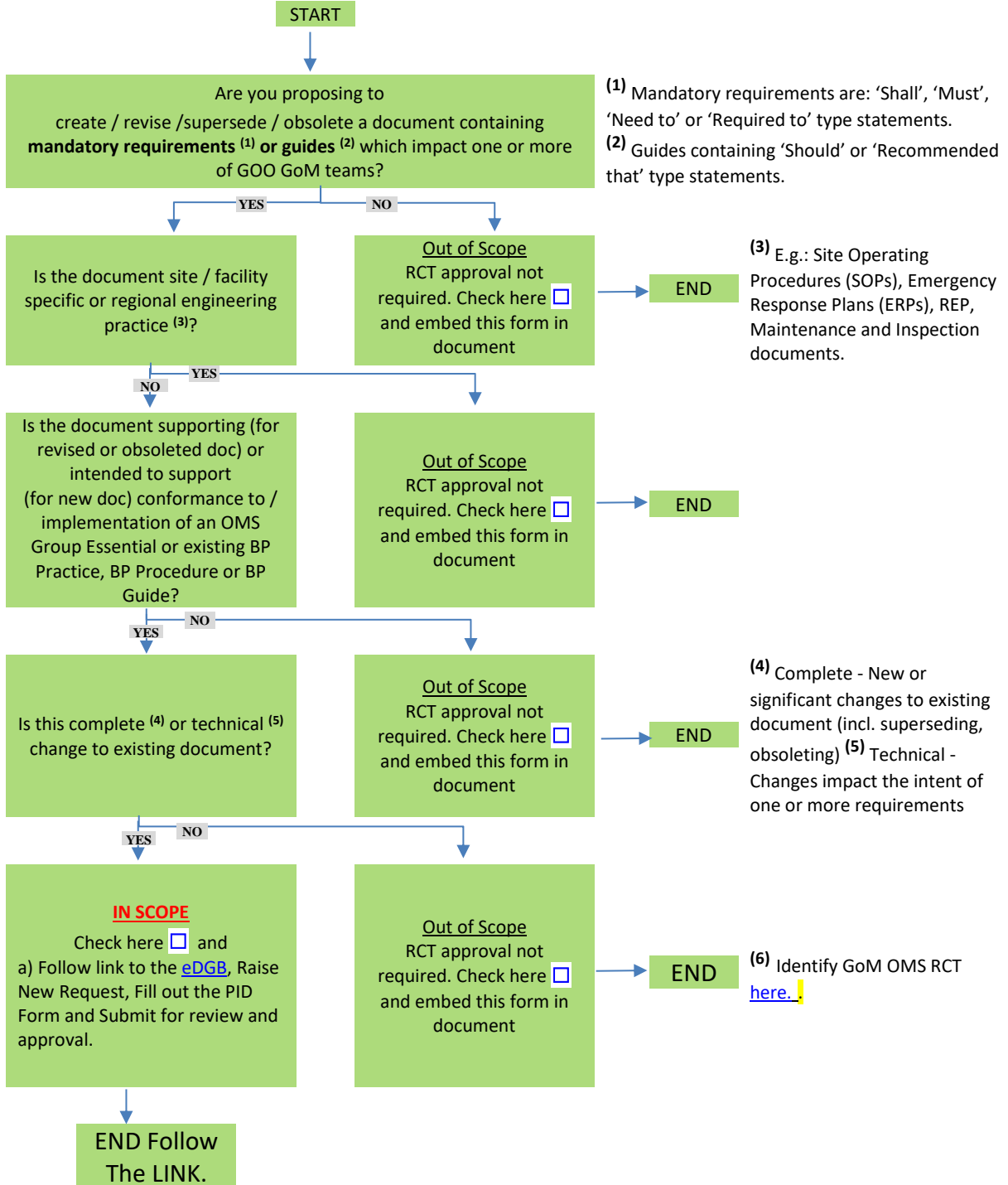
29 CFR 1926.450 Scaffolding

<b>Document Number:</b>	UPS-US-SW-GOM-HSE-DOC-00106-2	<b>Document Title:</b>	General Safety Rules Safe Work Practice
<b>Revision Number:</b>	12	<b>Revision Date:</b>	12-Aug-24
		<b>Page:</b>	Page 15 of 17
<b>Warning: Check Document Management System to ensure you are using the correct revision.</b>			

# Gulf of Mexico

## Document Lifecycle Tree

Navigate through the form and click on the last box you ended through below selection process



<b>Document Number:</b>	UPS-US-SW-GOM-HSE-DOC-00106-2	<b>Document Title:</b>	General Safety Rules Safe Work Practice
<b>Revision Number:</b>	12	<b>Revision Date:</b>	12-Aug-24
		<b>Page:</b>	Page 16 of 17
<b>Warning: Check Document Management System to ensure you are using the correct revision.</b>			



# Gulf of Mexico

## Document Authorization Form

Navigate through the form and click on the last box you ended through below selection process

**This form to be used for non-critical documents only.**

**Refer to GOO GoM Management of Change Procedure for list of critical documents and additional guidance.**

Document Details			
<b>Document Number</b>	UPS-US-SW-GOM-HSE-DOC-00106-2	<b>Revision</b>	12
<b>Document Title</b>	GoM General Safety Rules		
<b>Next Review Date</b>	1/22/2029		
<b>Document to be Added/Removed - OMS Navigator</b>	<input checked="" type="checkbox"/> Yes <input type="checkbox"/> No	<b>OMS Sub-Element</b>	302
<b>Reason for Issue:</b> (check applicable)	<input type="checkbox"/> New	<input checked="" type="checkbox"/> Revise	<input type="checkbox"/> Supersede <input type="checkbox"/> Obsolete

### Document Sign Off

	Print Name & Title	Signature	Date
<b>Reviewer(s)</b> (if not applicable, put N/A in front of Name & Title, then sign and date)	Shane Fruge – P&O HSE&C Advisor		
<b>Training Completed</b> (if not applicable, put N/A in front of Name & Title, then sign and date)	Shane Fruge – P&O HSE&C Advisor		
<b>Communication Completed</b> (if not applicable, put N/A in front of Name & Title, then sign and date)	Shane Fruge – P&O HSE&C Advisor		
<b>Custodian – (Name &amp; Title, then sign and date)</b>	Jennifer Osterhaus – GoMC HSE&C Manager		
<b>Authority – (Name &amp; Title, then sign and date)</b>	Monique Boudreaux – GoM Safety Discipline Lead		
<b>Document Posted – (Name &amp; Title, then sign and date)</b>	IMDC Document Controller		

#### Other Instructions & Comments

Embed evidence of training and communication in the document.  
This form to be inserted as the last page of the document.

<b>Document Number:</b>	UPS-US-SW-GOM-HSE-DOC-00106-2	<b>Document Title:</b>	General Safety Rules Safe Work Practice
<b>Revision Number:</b>	12	<b>Revision Date:</b>	12-Aug-24
		<b>Page:</b>	Page 17 of 17
<b>Warning: Check Document Management System to ensure you are using the correct revision.</b>			